

QUICK SPECS

PLASMA TABLE SIZES

4' X 8'	6' X 22'
5' X 10'	8' X 12'
5' X 22'	8' X 22'
6' X 12'	

MATERIAL TYPES

ALUMINUM
STAINLESS STEEL
MILD STEEL

CAPABILITIES

PLASMA CUTTING
OXY-FUEL CUTTING
BEVELING OPTIONS
MARKING SOLUTIONS
DRILLING PROCESSES

ADVANCED MACHINE SOFTWARE

3D GRAPHICAL INTERFACE
ADVANCED NESTING FEATURES
INTERACTIVE NESTING VIEW
MACHINE INTEGRATION
PART DEVELOPMENT
BUILT-IN PART LIBRARY
TORCH HEIGHT CONTROL

AUTOMATIC PLATE SKEWING
DUAL BEVELING CAPABILITIES
ADVANCED PIPE SCANNING
DOME CUTTING
STRUCTURAL PROCESSING
(CHANNEL, ANGLE, TUBING)
BEAM, FLATBAR, ETC

MAKE YOUR MOVE

THE X-CUT BEVEL-X SYSTEM IS A HIGH-QUALITY AND AFFORDABLE SOLUTION DESIGNED SPECIFICALLY FOR MEDIUM AND HEAVY INDUSTRIAL SETTINGS.

Base Frame

- HEAVY DUTY STEEL FRAME CONSTRUCTION
- FULLY WELDED MAIN SUPPORT FRAME
- POWDER-COATED EXTERIOR COVERS
- IGUS TRACK ON X AND Y AXES
- ADJUSTABLE LEVELING FEET

Robust Enclosure

- CUSTOM CONTROLLER ENCLOSURES PROVEN TO HANDLE HARSH SHOP ENVIRONMENTS
- EMERGENCY STOP BUTTON
- JOYSTICK FOR MANUAL JOGGING
- WIFI CAPABILITIES
- USB PORTS FOR FILE TRANSFER

Filtration

- WATER TABLE (INCLUDED)
- DOWNDRAFT CAPABLE

Gantry

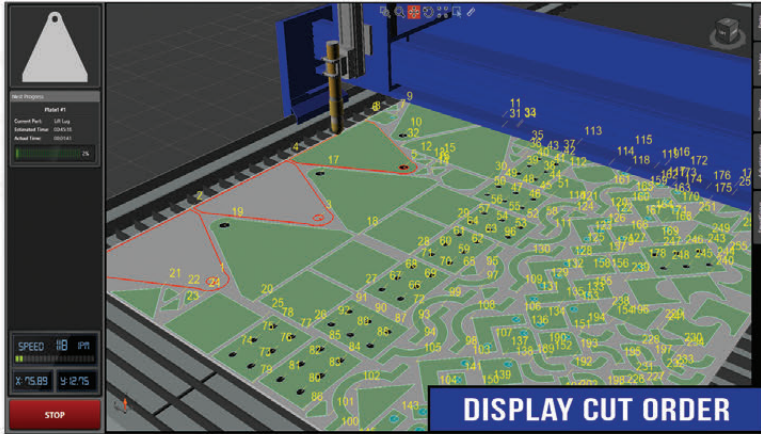
- RIGID ANODIZED ALUMINUM EXTRUSION
- DUAL SIDE DRIVE
- 20MM LINEAR GUIDES ON ALL AXES
- OUTWARD FACING GEAR RACK

Overview

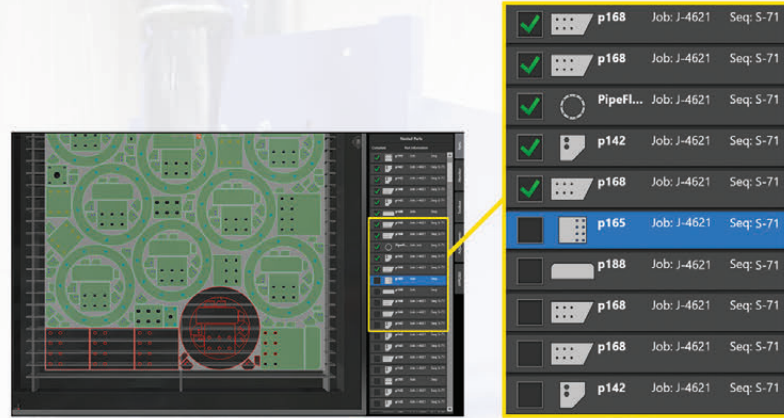
THE USER FRIENDLY INTERFACE AND POWERFUL CONTROL SYSTEM ENABLE PRECISE CUTTING AND INTRICATE DESIGNS, OPTIMIZING PRODUCTIVITY. WITH ITS COMBINATION OF RELIABILITY, AFFORDABILITY, USER FRIENDLINESS, AND ADVANCE FEATURES. THE INDUSTRIAL PLASMA TABLE PACKAGE IS THE PERFECT CHOICE FOR INDUSTRIAL BUSINESSES LOOKING TO STREAMLINE OPERATIONS AND ACHIEVE SUPERIOR CUTTING RESULTS.



3D GRAPHICAL INTERFACE



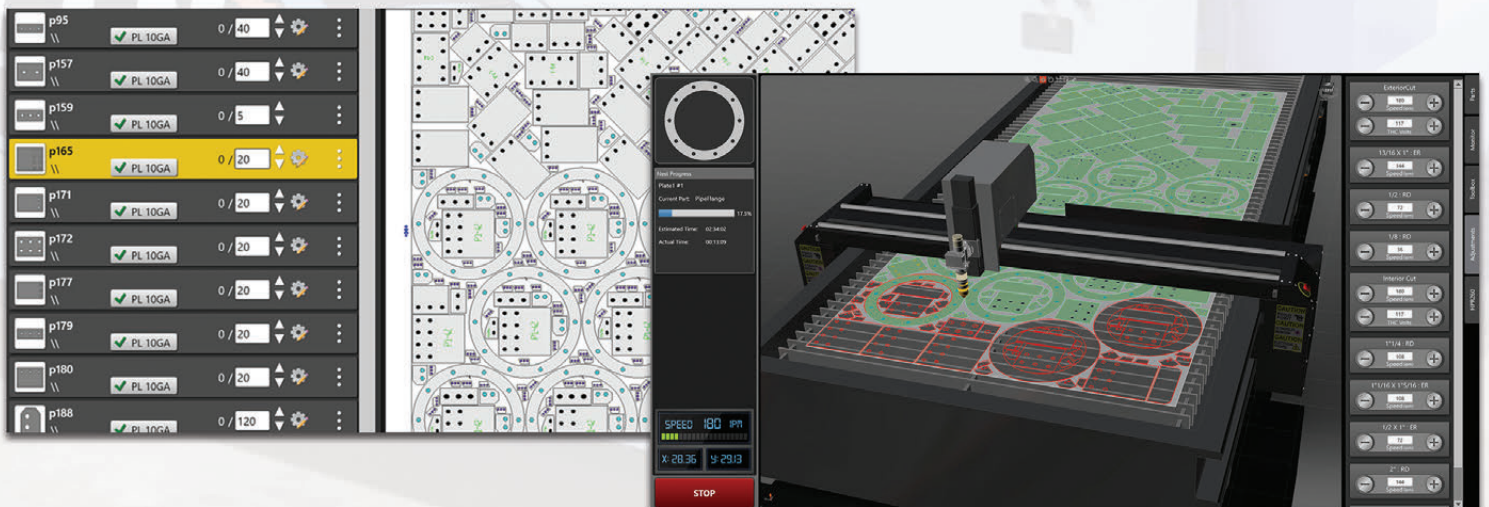
INTERACTIVE NESTING VIEW



REAL-TIME DATA GRAPHING FOR PROBLEM SOLVING



NESTING MACHINE INTEGRATION



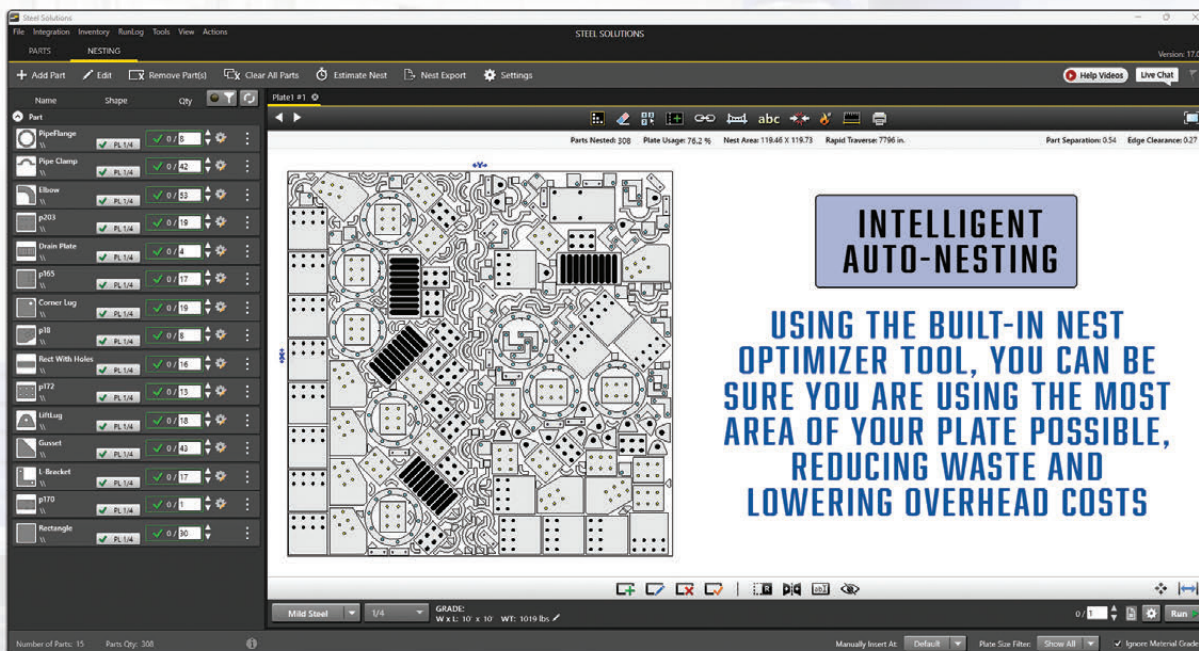


COMES WITH STEEL SOLUTIONS®

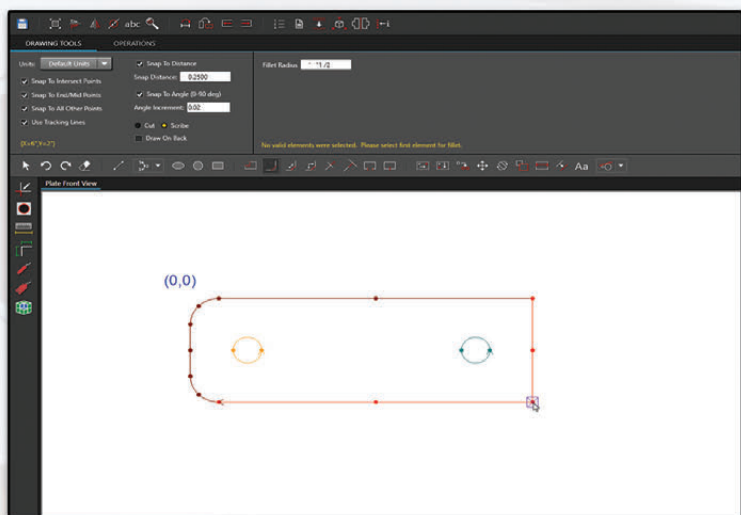
NESTING SOFTWARE.

TWO SEATS INCLUDED: ONE FOR MACHINE AND ONE FOR OFFICE

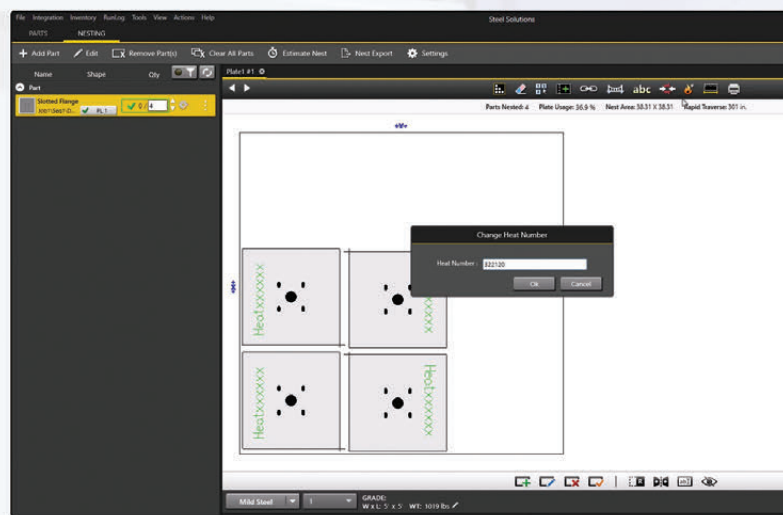
ADVANCED NESTING CAPABILITIES



PART DEVELOPMENT



STANDARD & DYNAMIC STENCIL GENERATION



SEAMLESS INTEGRATION WITH:



MACHINE CONTROLLER FEATURES

✓ = included + = optional upgrade

Insight Controller

Plate Solutions Nesting Software (Two Seats)	
Steel Solutions Nesting Software (Two Seats)	✓
Built-In Cut Parameters	✓
Real-Time Interactive 3d Model	✓
Run-Time Operation Adjustments	✓
Cut Path Jogging	✓
New Lead-In Generate During Run Time	✓
Saved Locations / Home Points	✓
Remnant Tracing	✓
Skeleton Cut Up	✓
Trial Mode for Nest Run	✓
Built-In Customizable Part Library	✓
Consumable Life Tracking	✓
Interactive Run Time Part List	✓
Nest Recovery Wizard	✓
Monitoring and Diagnostics	✓
Sight Laser	✓
Manual Plate Skewing	✓
Advanced Measuring Laser	✓
Automatic Plate Skewing	✓
Advanced Diagnostics w/ THC Graphing	✓
Preventative Maintenance Alerts	✓
Dual Monitor Controller	+
Machine Camera	+
Wireless Remote Options	+
Straight Line Bevel Cutting	+

MACHINE CONTROLLER FEATURES CONTINUED

✓ = included + = optional upgrade

Insight Controller

Advanced Contour Bevel Cutting	+
Basic Pipe Processing	+
Advanced Pipe Processing	+
Advanced Dome Processing	+
Dual Plasma Options	+
Auto-Drill (Pneumatic)	+
2hp Drill	+
20-30hp Drill	+
Automatic Tool Changer	+
Single-Dot Ink Marking	+
Multi-Dot Ink Marking	+
Dot-Peen	+
Pen Trace Tool	+
Pneumatic Scriber	+
Multi Gas-Torch Cutting	+
Dust Collection Integration w/ Zoning	+
Downdraft w/ Conveyor	+
Safety Curtain	+
Multi Torch Auto-Spacing	+

NESTING SOFTWARE FEATURES

✓ = included + = optional upgrade

Steel Solutions

True-Shape Auto Nesting	✓
Manual Nesting	✓
Remnant Management	✓
Crop Line Generator	✓
Part-in-Part Nesting	✓
Chain Cutting	✓
Part Collision Detection	✓
Generate Cut Order Auto or Manual	✓
Nest Thermal Sequencing	✓
Nest Reporting	✓
Full CAD Package (Part Programming)	✓
Path Smoothing Macro	✓
Auto-Generate Part Stencils	✓
Part Error Checking	✓
Customizable Part Library	✓
2D & 3D Part View	✓
New Part Creation	✓
Auto-Nesting Optimizer	✓
Tool Specific Kerfing	✓
Bridge Cutting	✓
Generate Heat Number	✓
Live Chat for Tech Support	✓
Help Video Library	✓
Generate Heat Number	✓
Bridge Cutting	✓
Auto-Nest Grid Fit & Part Clustering	✓

NESTING SOFTWARE FEATURES CONTINUED

✓ = included + = optional upgrade

Steel Solutions

Multiple Material/Thickness Per Project	✓
Advanced Cope Library	✓
Hole Pattern Programming	✓
Tekla PowerFab Integration	✓
Inventory Management	✓
Machine & Project Run Logs	✓
Nest Time and Cost Estimating	✓
Skeleton Dividing for Auto-Nest	✓
DXF/DWG Importing	✓
Artwork Importing (.svg)	✓
Image File Importing (.jpg, .png)	✓
DSTV Importing	✓
Load Files from CSV / Excel	✓
Load Files from CNC	✓
Structural DXF Importing	+
3D Importing (from Solidworks or Inventor)	+
DSTV+ Importing	+
Pipe Programming	+
Dome Programming	+
Structural Part Multing	+
Assembly Marking	+

PLASMA OPTIONS

✓ = included + = optional upgrade

Insight Controller

HYPERTHERM PLASMA OPTIONS	
PowerMax	+
PowerMax Sync	+
XPR170	+
XPR300	+
XPR460	+
HPR Plasmas	+
KJELLBERG PLASMA OPTIONS	
Kjellberg SmartFocus	+
Kjellberg Q	+
LINCOLN PLASMA OPTIONS	
FineLine	+
FlexCut	+

LINCOLN
ELECTRIC



**FINELINE
HIGH DEFINITION
PLASMA**



**FLEXCUT
SERIES
80 & 125**



**POWERMAX 125
&
105 SYNC**



**XPR SERIES
170, 300, & 460**



MAXPRO 200

Kjellberg
FINSTERWALDE



**SMART FOCUS
SERIES**



Q-SERIES